

# **THE US ARMY AND ITS POSTAL SERVICE ABROAD DURING WORLD WAR II**

This exhibit was created by, and is the property of the late Al Kugel, and is being supplied by his heirs as a courtesy to the Military Postal History Society. (See <http://militaryphs.org>) The Military Postal History Society (MPHS) is a non-profit organization for philatelists and stamp collectors interested in the collecting and studying of the postal aspects of all wars and military actions of all countries, including soldiers' campaign covers, naval mail, occupation and internment covers, patriotics, propaganda, V-mail, censorship and similar related material.

The US Army at War  
Establishing Defense and Supply Systems

Pacific Ocean Westward  
New Caledonia, New Hebrides

June 15 1942

Dear Mrs Engel

I will drop you a few lines to let you know I am feeling fine and in the very best of health. the weather is fine here it suppose to be winter here. But it is just like Florida weather. Tell Ruth Ann I would like a picture of her as I haven't received any as yet. Always  
Pfc John T. Robin  
Co 1328 TFC 814 B  
Postmaster APO 502  
San Francisco Calif  
U.S. ARMY. V...

Soldier's Mail  
Free

U.S. ARMY POSTAL SERVICE  
JUN 22 1942  
A.P.O. 502

2 East 137 Place  
Chicago Ill  
U.S. A.

Censored by  
W. Wells  
Capt. Inf.

APO 502, Noumea, New Caledonia (opened 13 March 1942). APO 932, Vila, Efate Island, New Hebrides opened 4 May 1942. The 24<sup>th</sup> Infantry (Colored) arrived in the New Hebrides on 2 May 1942.

St. M. J. Conneely  
24 Inf. APO. 932  
c/o Postmaster  
San Francisco, Cal.

U.S. ARMY POSTAL SERVICE  
SEP 11 1942  
A.P.O. 932  
FREE

5 1/2 Charles J. Forsell  
U.S. Naval Radio School  
Noroton Heights, Conn.

EXAMINED BY  
BASE BY  
1900  
ARMY  
EXAMINER  
H. Shaver

S. L. U.S. A.

By February 1942 the Japanese realized that they did not have the forces to invade Australia, so they decided to interdict the Allied supply lines by taking New Caledonia, then Fiji and American Samoa. The US, recognizing the importance of New Caledonia, sent the bulk of 17,500 man Task Force 6814 to New Caledonia where it provided the troops for the Americal Division. A small detachment was sent to New Hebrides to guard those islands while airbases were being built.

The US Army at War  
Establishing Defense and Supply Systems

Pacific Ocean Westward  
Bora Bora, Canton Island, Fiji, Tonga

APO 919, Bora Bora  
(opened 15 February  
1942). Early APO 919  
postmarks appear without  
day and (usually) month  
slugs, and without unit  
identification in return  
address. The reasons for  
this are not reported.



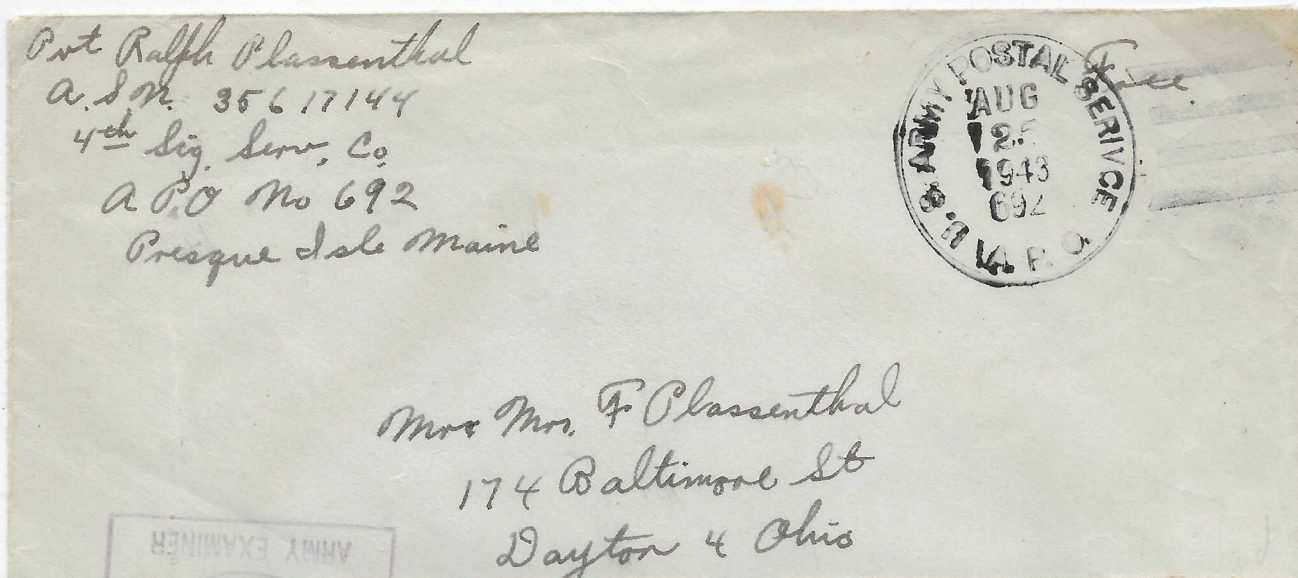
APO 914, Canton Island.  
Previously used by Pan-Am as a  
stop for the China Clipper.

APO 913, Fiji. Established on 15  
February 1942 to serve Army Air  
Corps personnel. US ground  
forces landed on 13 May to  
relieve the Australian garrison  
this island.

APO 930, Tonga. US troops  
arrived on Tonga 30 April 1942.

THE US ARMY AT WAR  
DEFENSE AND SUPPLY SYSTEMS  
WESTERN HEMISPHERE

Eastern Canada and Newfoundland



On 18 August 1940 the US President and Canadian Premier agreed to establish a Joint Board of Defense. In time this led to the stationing of US forces in Canada to support the US war effort and to free Canadians for service with British forces. The 2 September 1940 Lend Lease Agreement with Great Britain provided for US bases in Newfoundland as well. Air bases in Newfoundland and eastern Canada were important for the protection of convoys travelling to Great Britain.

APO 692, Frobisher Bay, Baffin Island, Canada, opened September 1942, APO 866, Quidi Vidi, Newfoundland, opened April 1942. Latter cover paid for quicker transmission by Canadian civilian airmail.



In November, 1941 the US sent troops to protect American interests in Dutch Guiana. In February, 1942 US Army troops took over defense of the Dutch Antilles from French and British troops that had occupied them in May, 1940.

Occupation of French possessions in the Western Hemisphere was a touchier issue, as the US continued to recognize the Vichy government until late 1942. Only French Guiana was occupied by US troops.

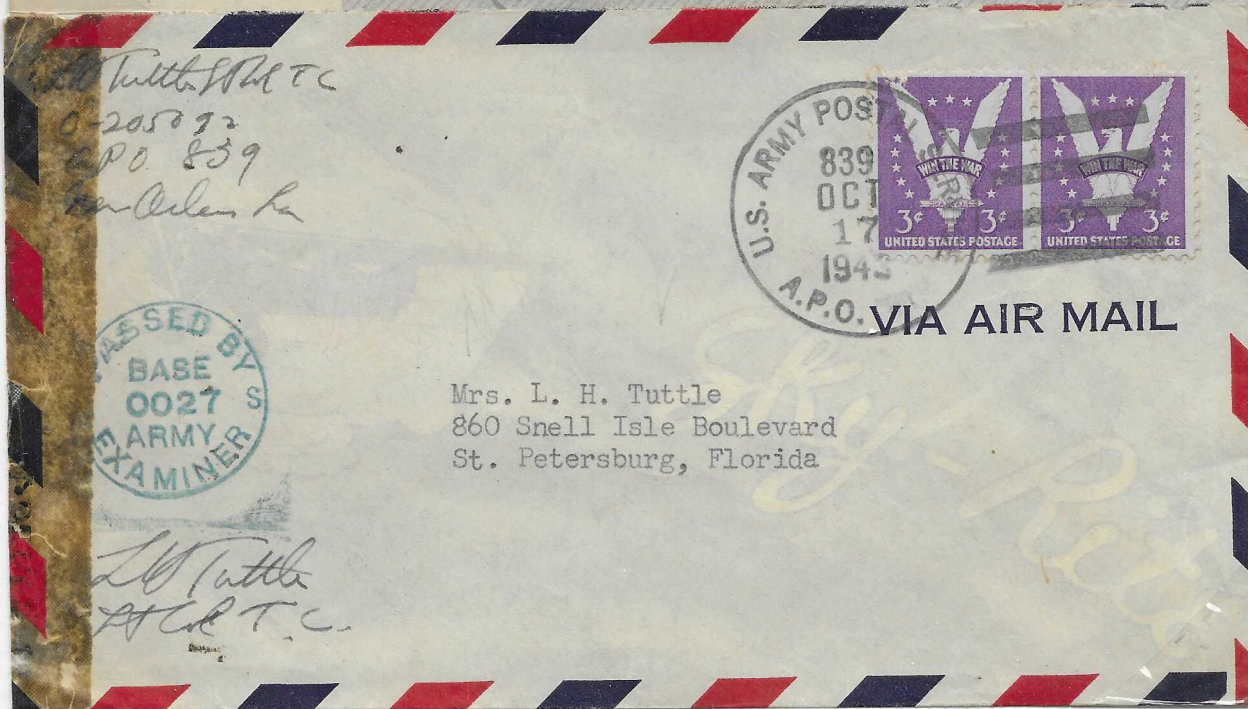
APO 870, Paramaribo, Surinam (Dutch Guiana). APO 811, Dakota Field, San Nicholas, Aruba, Dutch Antilles. APO 418, Gallion Field, Cayenne, French Guiana.



APO 662, Beta Air Base, Seymour Island, Galapagos Islands, Ecuador. APO 822, San Antonio, Chile. APO 876, Las Piedras, Venezuela. APO 817, Talara, Peru. Each of these APOs opened in early 1942. APOs 822 and 876 closed in mid-1943. APO 817 registry backstamp on the cover above indicates that reports that it was a mailing address only are wrong.

The US Army at War  
Establishing Defense and Supply Systems

Western Hemisphere  
Central and South American Republics



In January, 1942 21 nations met In the Inter-American Conference to adopt measures for hemispheric defense. While passage of a resolution calling for severance of diplomatic relations with the Axis Powers was easily achieved, the touchier issue of basing US troops was left to country-by-country negotiations. Eventually, US APOs were opened to serve bases in Guatemala, Panama, Venezuela, Ecuador, Peru, Chile and Brazil. The principal missions of the US Army troops sent to these bases involved coastal defense, anti-submarine warfare and maintenance of air transportation facilities.

APO 838, Rio Hato, Panama. (Note SERIVCE error in postmark.) APO 839, Guatemala City. Opening date for this APO is sometime in July, 1942. Based on middle cover, it would appear to be after July 4.

The US Army at War  
Establishing Defense and Supply Systems

Western Hemisphere  
Caribbean

Lt. Wm. H. Carter  
Medical Detachment  
APO #695 C/O P.M. NYC. NY.



REGISTERED  
NO. 185

After 5 days, return to

Cpl. Donald R. Moore, 13040374  
23rd. Antisubmarine Sq. Det.  
A.P.O. 632, C/O Postmaster  
MIAMI, FLA.

Censored by:  
William H. C.  
1st Lt. O-4



SGT. GEORGE L. BENT (48TH SIG PLAT.)  
APO 848, C/O P.M.  
NEW YORK, N.Y.

U 01032 S  
ARMY EXAMINER

VIA AIR MAIL



FEDERAL COMMUNICATIONS COMMISSION  
WASHINGTON, D.C.

REGISTERED  
NO. 2

P.C. Behr  
1st Lt. P.C.

Most of the basing rights given to the US under the Lend Lease agreement were on British island colonies in the Caribbean. In addition to providing airbases from which US planes could mount anti-submarine operations, the presence of US defense troops freed up British troops for service in Europe. Concurrent with the expansion into British Caribbean possessions, the US also built up and augmented its existing bases in Cuba, Puerto Rico, the Canal Zone and the US Virgin Islands.

APO 695, Waller Field, Trinidad. APO 632, Batista Field, San Antonio de los Banos, Cuba. APO 848, Losey Field, Ponce, Puerto Rico.



DEFENSE AND SUPPLY SYSTEMS  
ATLANTIC OCEAN EASTWARD

The US Army at War

Greenland, Iceland

*Pvt. W. H. Treichler  
Co. F, 21st Engrs. Avn.  
A.P.O. 809 Greenland  
U. S. Army*



*Free*

U  
ARM

AFTER <sup>7</sup> DAYS RETURN TO—

*Sgt. A. W. Terchione  
A.P.O. 615 1/2 P.M. NYC*



*Free*

RICHARD G. FORT, CAPT., M.C.  
CO. "A", 5TH MED. BN.  
APO #5, U. S. ARMY  
% POSTMASTER, N.Y., N.Y.



VIA AIR MAIL

AIR-MAIL\*\*\*\*\*REGISTERED

REGISTERED  
NO. 4709

EVANSTON TRUST AND SAVINGS BANK  
EVANSTON, ILLINOIS  
U. S. A.

*Richard G. Fort, capt.*

On 9 April 1941 the Danish government granted the US rights to defend Greenland. Iceland, whose monarch was the King of Denmark, had a separate government that, on 8 July 1941, reluctantly invited US troops to replace the British who had earlier occupied the island. This was done first by US Marines, followed by Army troops in 1942. With air naval facilities on these 2 islands, the US took responsibility for guarding convoys from North America to Great Britain.

APO 809, Narsarsuak, Greenland, opened 19 June 1941. APO 615, Ivigtut, Greenland. APO 5 (5<sup>th</sup> Infantry Division), Baldurshagi, Iceland.

The US Army at War  
Establishing Defense and Supply Systems

Atlantic Ocean Eastward  
Brazil, Ascension Island.



In 1942, with Axis air superiority in the Mediterranean and trans-Pacific routes either already interdicted or under serious threat, the US established supply routes to Egypt and beyond via the South Atlantic and Africa. The Army supplied air cover for convoys, for which air bases in Brazil and West Africa were built.

These South Atlantic bases also provided the first links in a series of air fields that went on to span Africa and the Indian subcontinent. A key consideration in their placement was the 1600 mile range of the C-47 cargo aircraft in service at the beginning of the war. Thus, while bombers could cover greater ranges, the airfields in the Brazil-to-Cairo supply chain were spaced about 1500 miles apart.

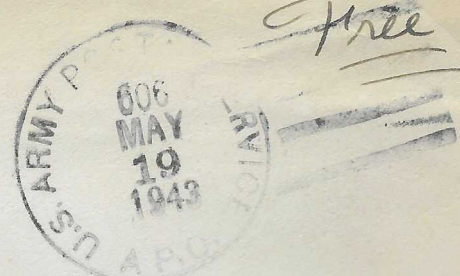
APO 604, Natal, Brazil, the jump-off point for flights across the South Atlantic. APO 877, Ascension Island, South Atlantic. US troops arrived 30 March 1942 to build an airfield there.

The US Army at War  
Establishing Defense and Supply Systems

Atlantic Ocean Eastward  
Gold Coast, Liberia

*S/Sgt. Francis J. Doucette*  
S/Sgt. FRANCIS J. DOUCETTE,  
A. S. N. 11039059,  
Hqs., AMEW, ATC, APO 625  
c/o Postmaster, Miami, Florida.

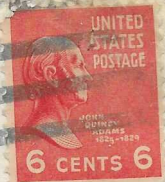
*Miami letter*



*Free*

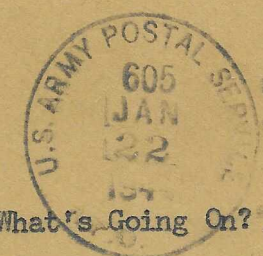
1st. Lt. W. F. Telken T.C.  
O-333019 A.P.O. 605  
% Miami Postmaster  
Miami, Florida

*Mail Delivery*



S/Sgt. *J. Guerrasio*  
A. S. N. - 32218298  
Hq. & Serv. Co. #5889  
A.P.O. #601, c/o P.M.  
Miami - Florida  
U.S. Army

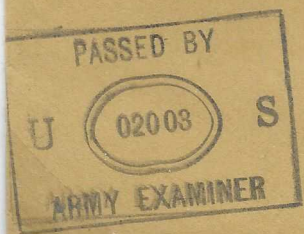
*Free*



St.  
Office  
address



Editor, What's Going On?  
N. Y. Herald Tribune  
230 West 41st Street  
New York 18,  
New York



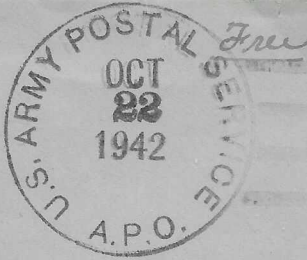
APO 625 and 606, both Accra,  
Gold Coast. APO 601 and 605,  
both Roberts Field, Monrovia,  
Liberia.

Accra, Gold Coast, a significant couple of hundred air miles closer to Ascension than either Monrovia or Leopoldville, was chosen as the site for the headquarters of both the West Africa Service Command and the Central Africa Division, Air Transport Command. Monrovia, Liberia, 2000 air miles from Natal Brazil, was just within the range of early versions of the B-17 and well within range for B-24s. US troops arrived in Liberia on 6 May 1942, and US aircraft started using Roberts Field shortly thereafter.

The US Army at War  
Establishing Defense and Supply Systems

Atlantic Ocean Eastward  
Belgian Congo, Nigeria, Sudan, Egypt

2nd St. Mary Ellen Row, 1725187  
23rd Station Hospital  
A.P.O. 663 % Postmaster  
Miami, Florida  
U. S. Army.



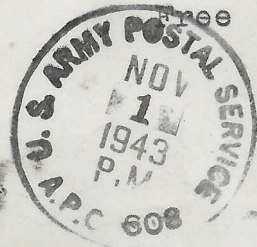
Prior to completion of the airfield at Kano, Nigeria in late 1942, cargo planes were required to fly via Leopoldville, to Khartoum en route to Cairo. The Kano airfield eliminated the need for the Leopoldville operation.

Pfc. Walter S. Anderson - 39827993  
13th Ferrying Group, 44th Squadron  
A.P.O. 607-D % Postmaster  
Miami, Florida.

P.A.S.  
U (13004)  
ARMY EXA



Lt. Ralph S Carr Jr  
Station #20 AMEW ATC  
c/o Postmaster APO 608  
Miami Florida



Mr. Ruel N Colby

Capt. H. Walter  
496 Eng. Co.  
A.P.O. #678  
c/o P.M. New York, N.Y.  
U. S. A.

FREE



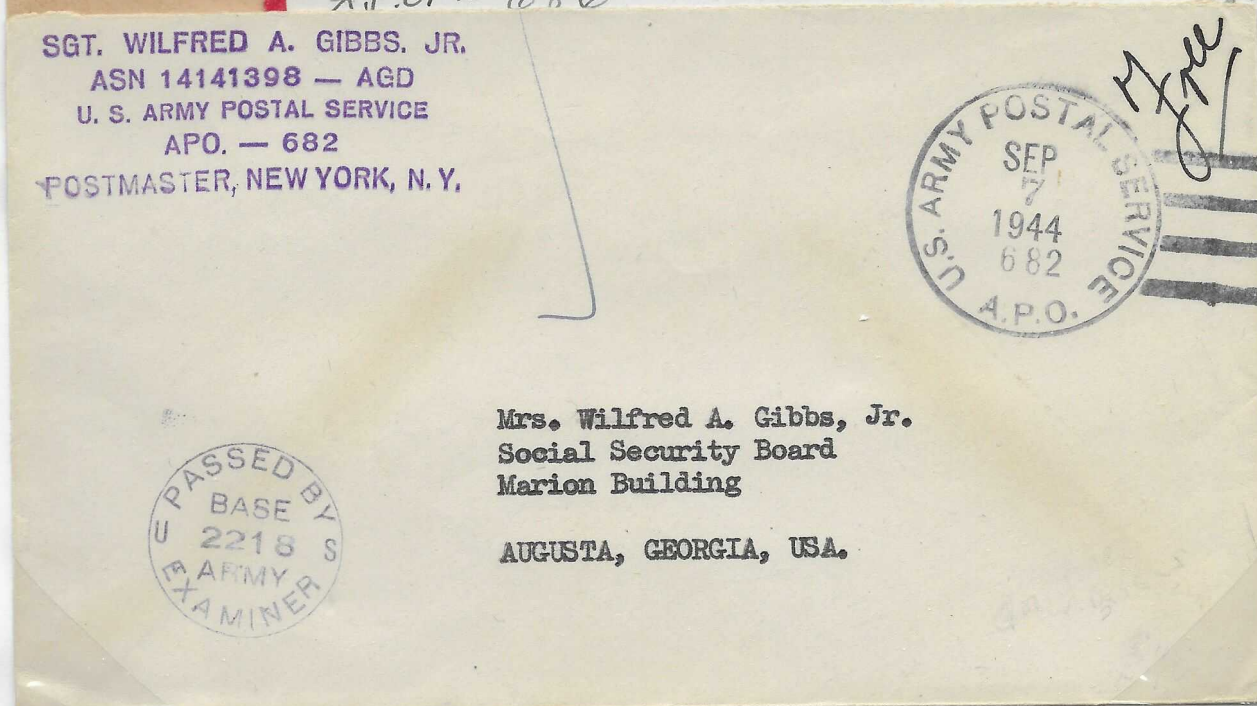
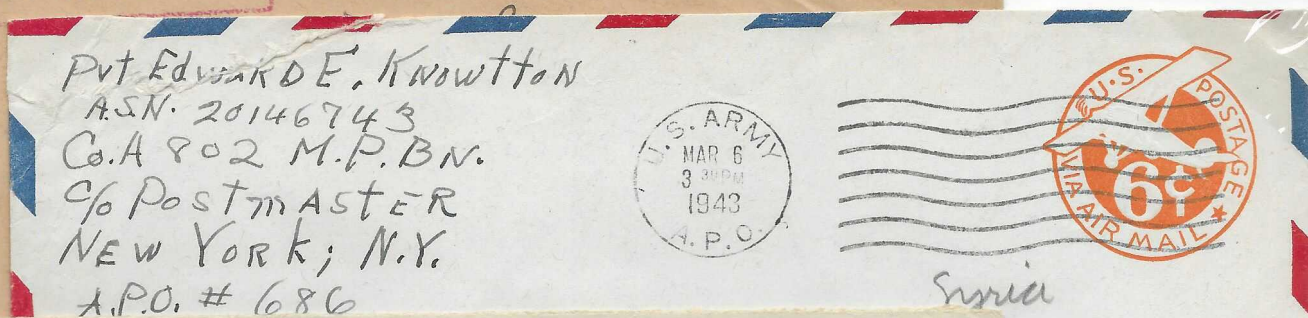
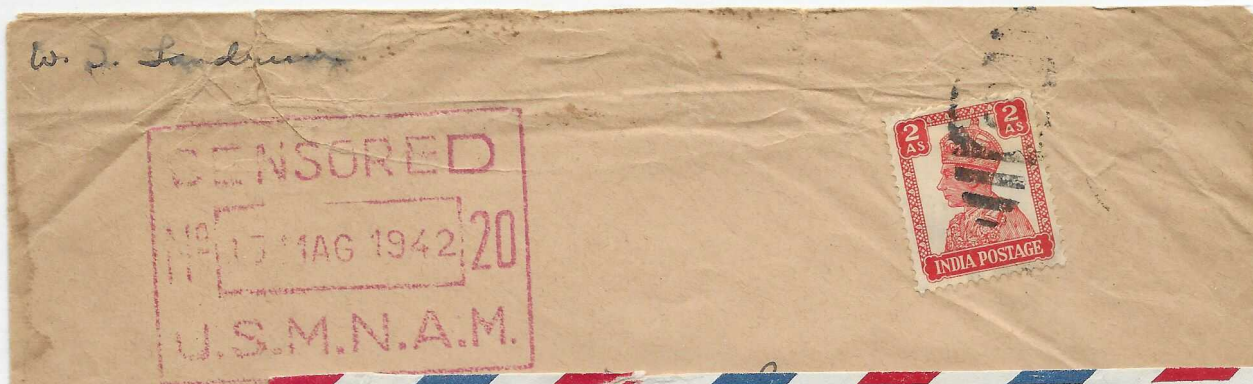
Evelyn Walter  
220 E 52nd St.  
New York, N.Y.  
U. S. A.

PASSED BY  
U (21030) S  
ARMY EXAMINER

APO 663, Leopoldville, Belgian Congo (from 27 March 1942 to 15 June 1943). APO 607, Kano, Nigeria (opened 2 November 1942). APO 608, Khartoum, Sudan (opened 9 June 1942). APO 778, Cairo, Egypt (HQ, Middle East Service Command; in operation by March 1942).

The US Army at War  
Establishing Defense and Supply Systems

Atlantic Ocean Eastward  
Eritrea, Egypt, Palestine



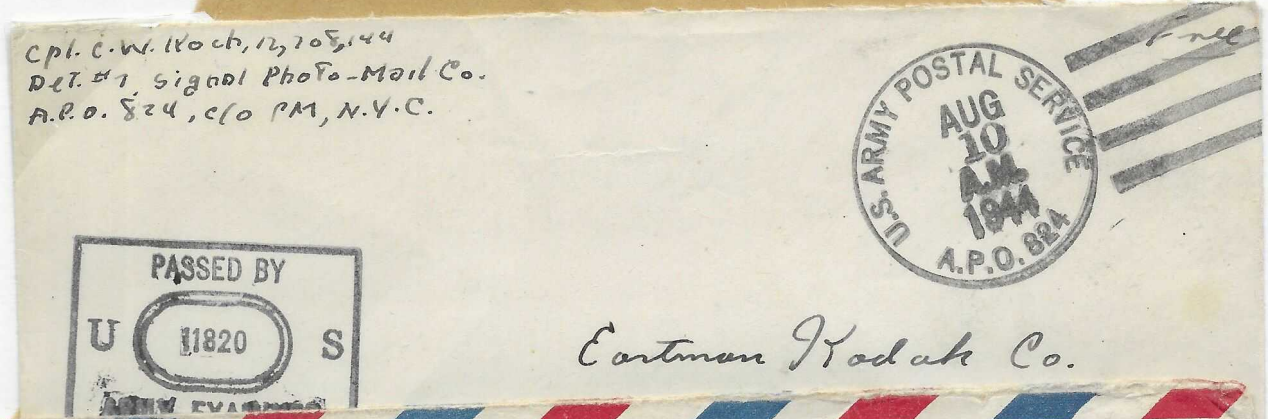
Sea-borne supplies and materiel destined for the Middle East and points north and east of there did not involve the US Army (beyond air cover provided over the Atlantic) until it reached Eritrea. Army port units operated at Massawa, Eritrea (first site of the US Military Mission, North Africa, which arrived before there was a US APO to serve it), and later from Suez, Egypt. The flow of supplies for the Levant was controlled from Palestine.

APO 686, Massawa, Eritrea (5 December 1942 to 2 October 1943, when it was moved to Suez, Egypt). APO 682, Tel Litwinsky, Palestine (HQ, Levant Service Command).

The US Army at War  
Establishing Defense and Supply Systems

Atlantic Ocean Eastward  
Iran

War materiel for Russia was sent via Iran, which the British and Russians occupied in April 1941. The US supply chain stretched from Abadan to Kazvin, with its headquarters in Teheran.



*Cartman Kodak Co.*

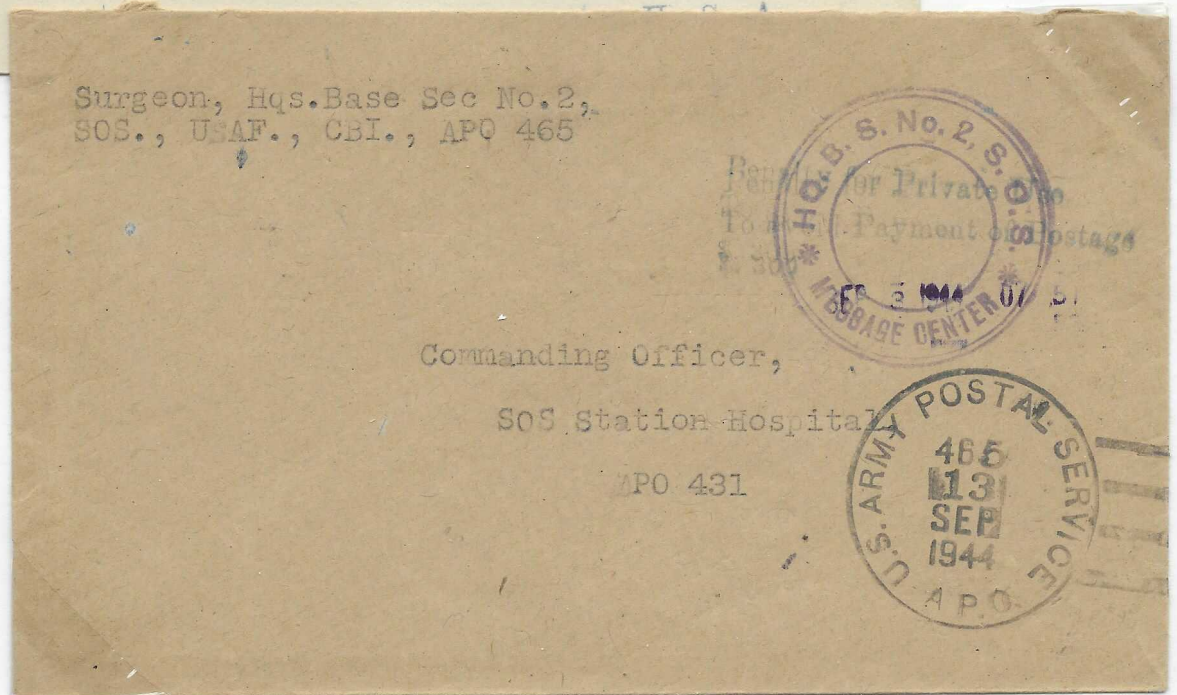
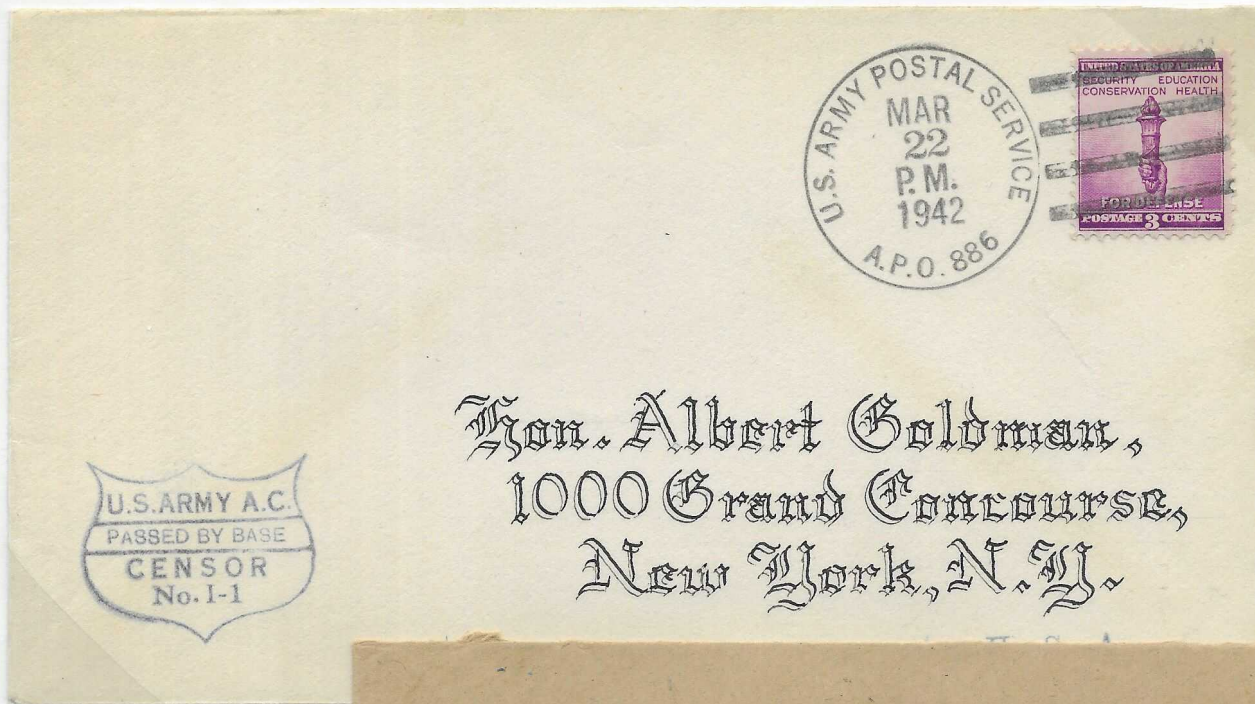


MRS CLYDE E. YODER  
56 H. STREET,  
CARLISLE, PENNSYLVANIA

APO 924, Abadan. APO 523,  
Teheran. APO 535, Kazvin.

The US Army at War  
Establishing Defense and Supply Systems

Atlantic Ocean Eastward  
India



A US Military Mission arrived in India in late February and a small detachment of airmen (thus the U.S. Army A.C. in early censors from here) arrived in March. US operations in India were initially directed toward bringing supplies to the beleaguered Indian and Chinese Armies. A major supply base was opened in the western port of Karachi on 27 May 1942, and a second supply base in Calcutta, on the other side of the subcontinent, opened on 20 September 1942.

APO 886, Karachi. (First day cover. Mr. Goldman was the postmaster of New York and mail for the US APOs in India came via his post office.) APO 465, Calcutta (to APO 431, Lalmanir Hat, India).